



www.csh.org/fuse

© All rights reserved. No use or reproduction without written permission from CSH.

OUR CLARION CALL

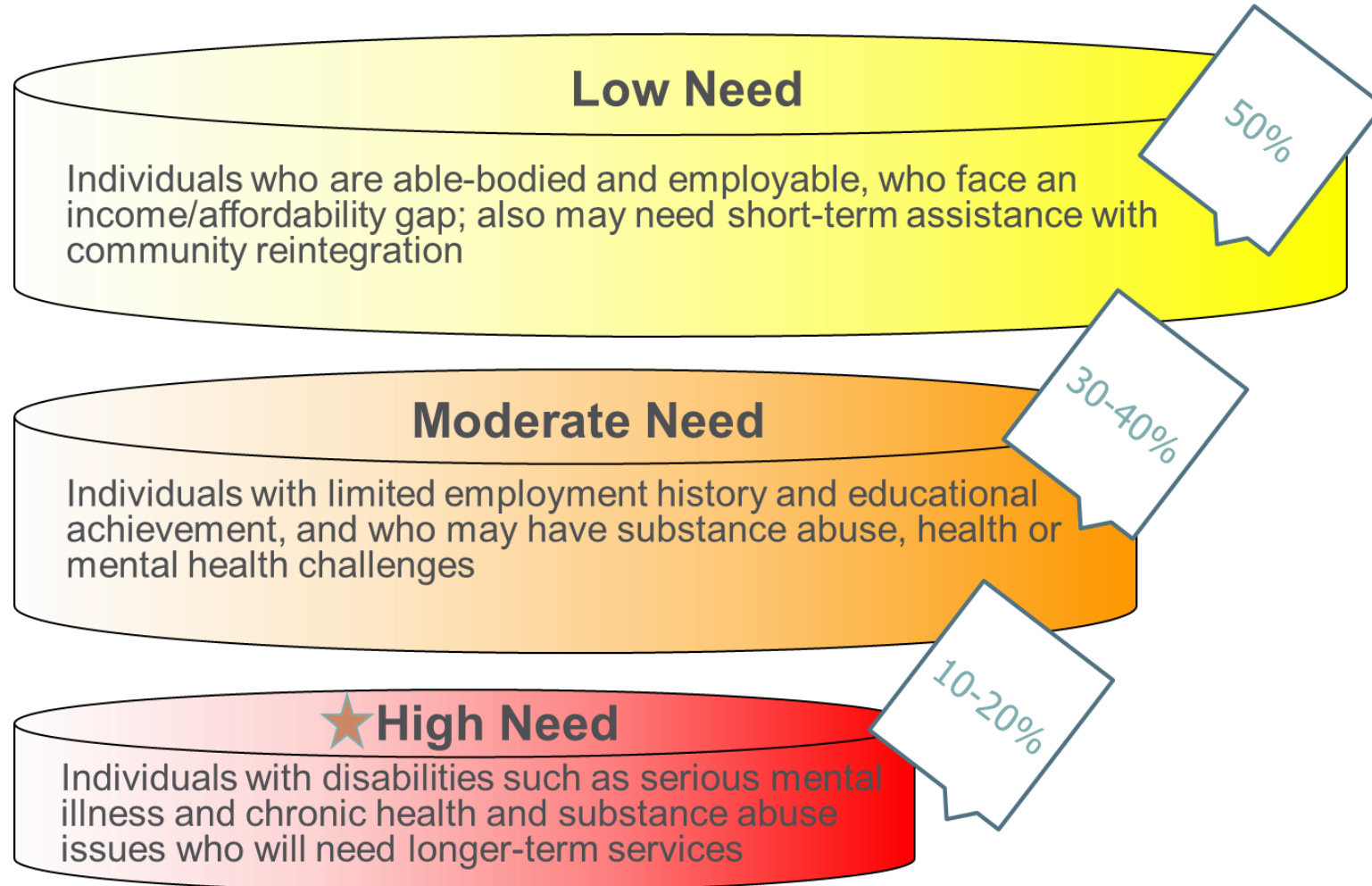
... is making sure that all people, particularly those with the greatest needs, have a place in the community and the support they need to thrive.





Over 75% of people exiting incarceration will return within 5 years.

Housing Needs Not One Size Fits All

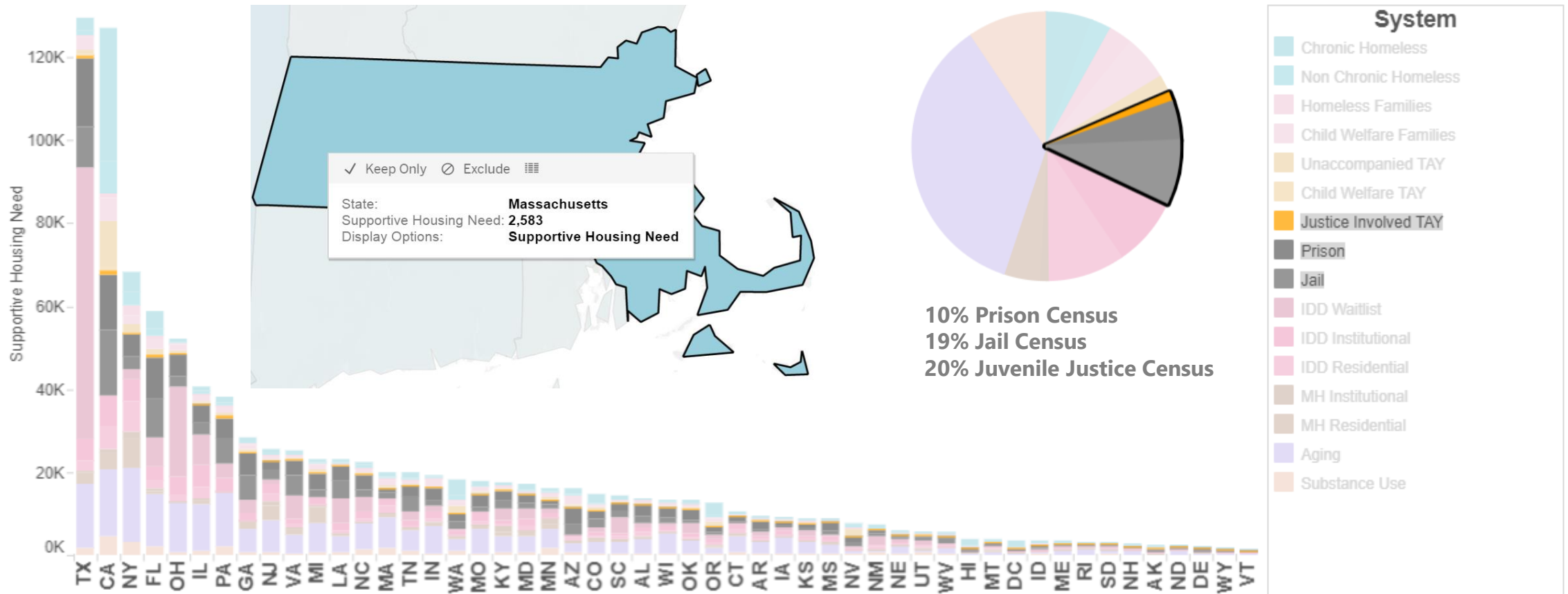




1,125,000

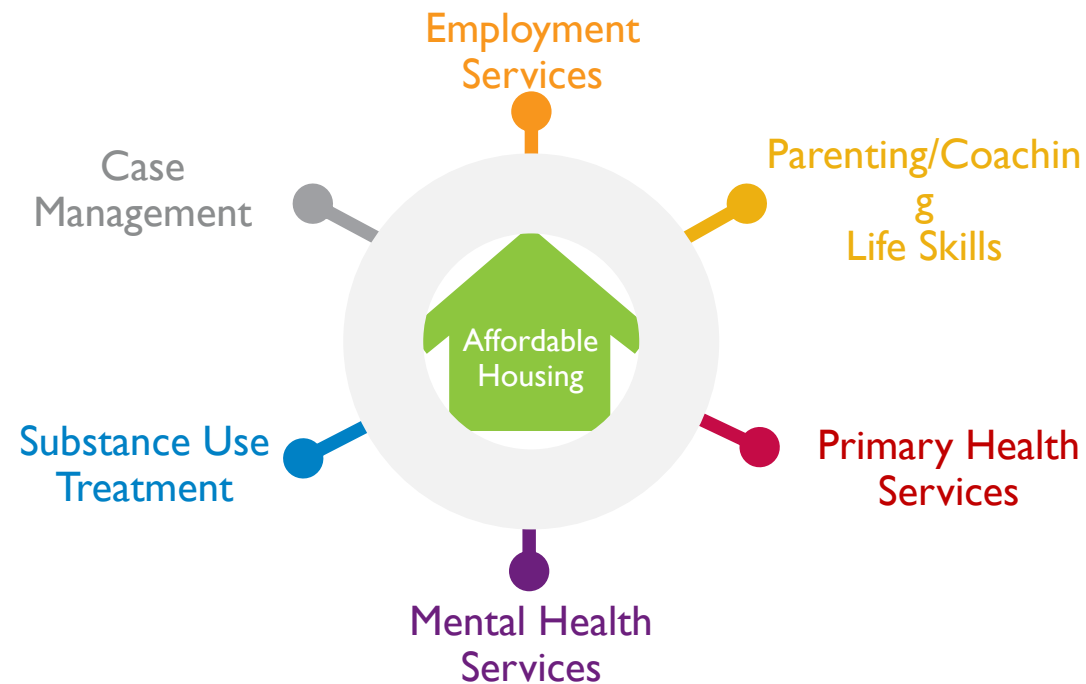
Individuals and families in the United States have needs consistent with supportive housing.

Justice Supportive Housing Need: MA



FUSE Supportive Housing

- Strengthened partnerships
- Efficient delivery of services
- Better use of limited resources
- Improved outcomes for people and communities



Housing:

- Affordable
- Permanent / Stable
- Independent

Support:

- Flexible
- Voluntary
- Person-centered Coordinated Services

Impact and Evidence

NYC
FUSE

40%

Reduction jail days

91%

Fewer shelter days

50%

Reduction in psychiatric input

86%

Housed after 2 years

San Diego
Project 25

67%

Reduction in total public costs after 2 years

60-80%

Reduction in ambulance, ER, hospitalizations, arrests, jail days

200%

Net savings of over paying for housing and services

MeckFUSE
(Charlotte)

50%

Fewer arrests

87%

Fewer shelter days

24%

Less ambulance service charges

43%

Less hospital charges

T h a n k Y o u

r y a n . m o s e r @ c s h . o r g

www.csh.org/fuse

© All rights reserved. No use or reproduction without written permission from CSH.