



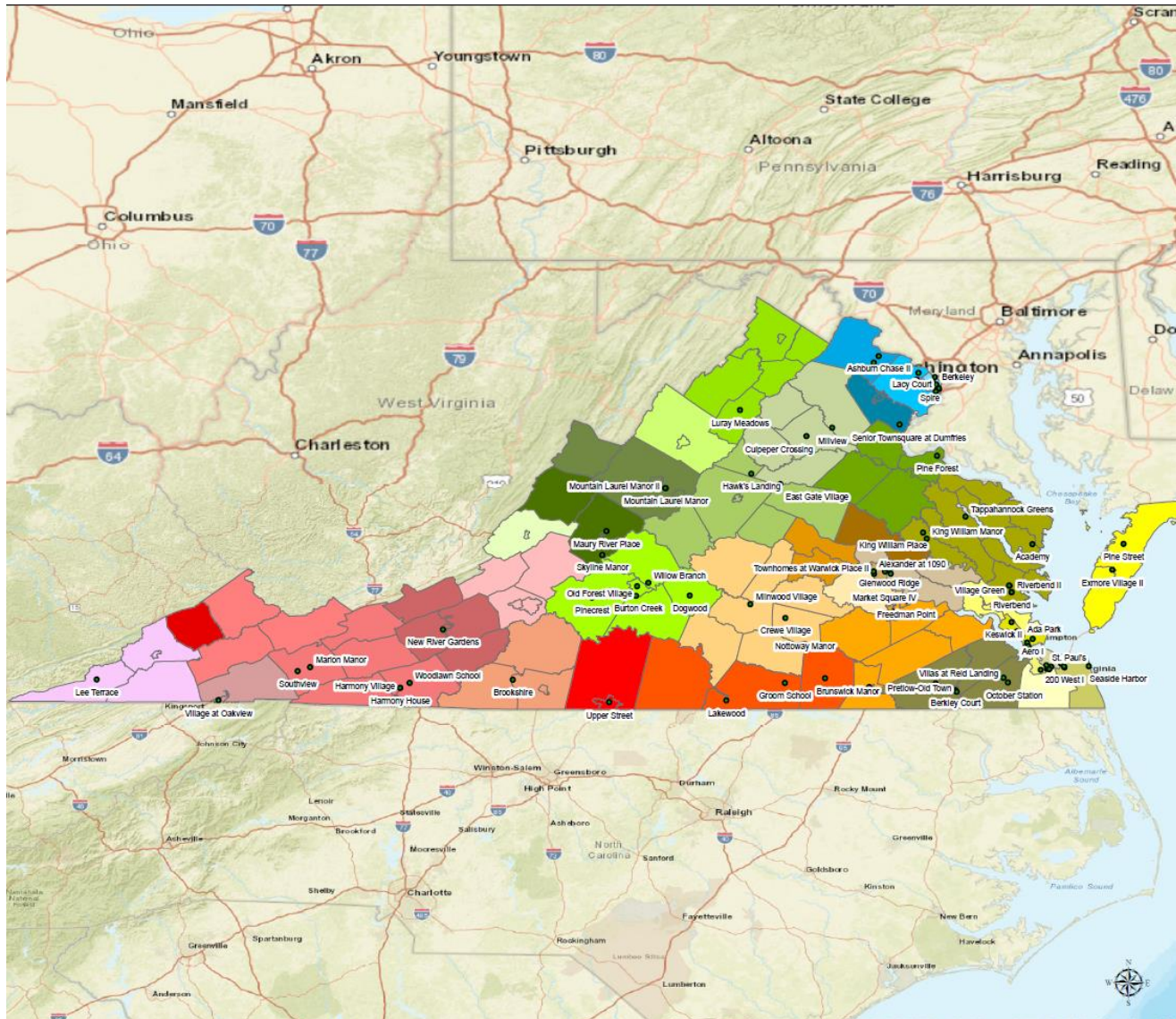
VHDA

Supportive Housing



- January 2012 DOJ Settlement Enacted
- QAP 2015-2018 (Point Category)
- Governor's Executive Order 2018 (PSH)
- QAP 2019 (Threshold)

96 Communities, 686 units for 2015-2018



Location of Properties

- DD Properties
- Allegheny Highlands Community Services Board
- Harrisburg Rockingham Community Services Board
- Horizon Behavioral Health
- Northwestern Community Services
- Rappahannock Area Community Services Board
- Rappahannock Rapidan Community Services Board
- Region Ten Community Services Board
- Rockbridge Area Community Services
- Valley Community Services Board
- Alexandria Community Services Board
- Arlington County Community Services Board
- Fairfax Falls Church Community Services Board
- Loudoun County Department of MHSA and Developmental Services
- Prince William County Community Services Board
- Blue Ridge Behavioral Healthcare
- Cumberland Mountain Community Services Board
- Danville Pittsylvania Community Services
- Dickenson County Behavioral Health Services
- Highlands Community Service
- Mount Rogers Community Services Board
- New River Valley Community Services
- Piedmont Community Services
- Planning District One Behavioral Health Sciences
- Southside Community Services Board
- Chesterfield Community Services Board
- Crossroads Community Services Board
- District 19 Community Services Board
- Goochland Powhatan Community Services
- Hanover County Community Services Board
- Henrico Area Mental Health and Developmental Services
- Richmond Behavioral Health Authority
- Chesapeake Integrated Behavioral Healthcare
- Colonial Behavioral Health
- Eastern Shore Community Services Board
- Hampton Newport News Community Services Board
- Middle Peninsula Northern Neck Community Services Board
- Norfolk Community Service Board
- Portsmouth Department of Behavioral Healthcare Services
- Virginia Beach Community Services Board
- Western Tidewater Community Services Board

- Ongoing Communication
- Monthly Polling
- DD Specific vs Target Populations
- Automated Process