

HOME Project Profile

District of Columbia |

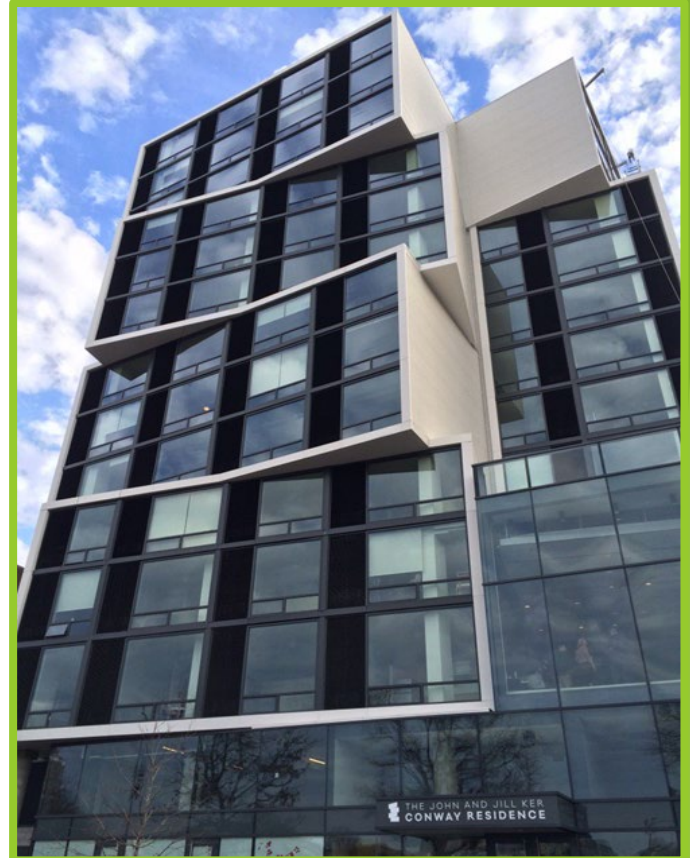
North Capitol Commons

OVERVIEW

The North Capitol Commons is a mixed-model, new-construction development providing 123 efficient low-income rental units, of which 60 have been reserved for adults living with special needs and experiencing homelessness. Sixty units of supportive housing target veterans leaving homelessness, and approximately 63 units target individuals earning up to 60 percent of the area median income. There is also a one-bedroom superintendent's apartment, ideal for a mixed-model supportive housing development.

FUNDING

Funding Sources	Investment Amount
HOME	\$7,000,000
LIHTC	\$9,786,018
Other Public Funds	\$6,270,000
Private Funds	\$10,913,894
Total Investments	\$33,969,912



HIGHLIGHTS

- ▶ **Location:**
District of Columbia
- ▶ **Program Type:**
Rental housing
- ▶ **Beneficiaries:**
Veterans living with special needs and experiencing homelessness
- ▶ **Total Units:** 123
- ▶ **HOME Units:** 63

