



2019 Boston

ANNUAL CONFERENCE
& SHOWPLACE

**Riverport Landings
Scholar House**

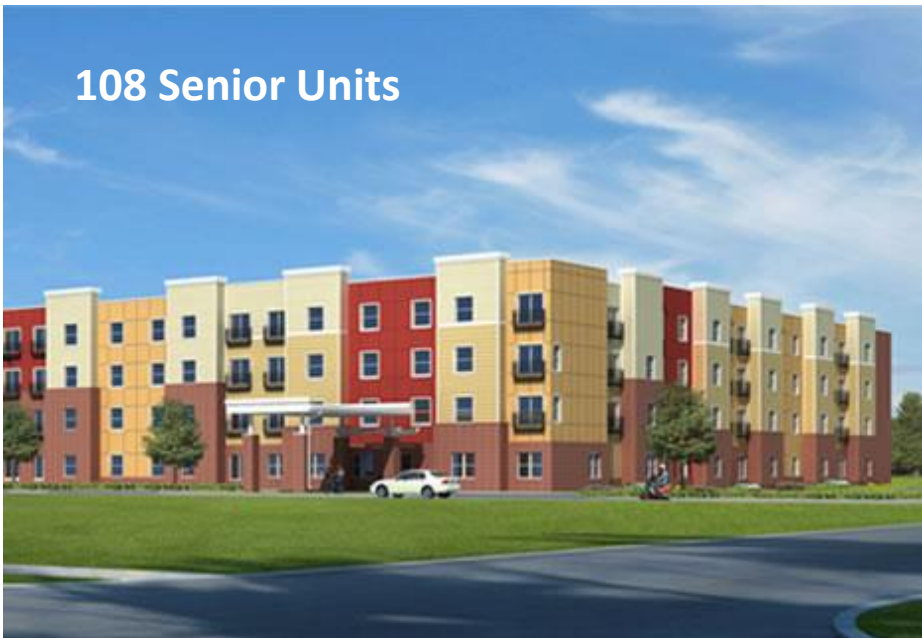
From Foster Care to College Degree





Riverport Landings is a \$71 million affordable housing project developing over 400 apartments in an “intergenerational community” located on a 64 acre site in Louisville, Kentucky





108 Senior Units

SENIOR LIVING



64 FSH Units

FAMILY SCHOLAR HOUSE



240 Family Units

FAMILY APARTMENTS

Campus Features

- A 2.5-acre park
- Educational Services Center serving residents and local community
- 18,000 square feet of retail space
- 16,000 square foot community service facility
- Pool
- Fitness Center



Scholar House Model

- GOAL = SELF SUFFICIENCY!
- Provides four years of housing assistance for individuals with low incomes working to obtain a college degree
- Includes on-site child care to eliminate barrier to attending college
- Makes health care and numerous other services readily accessible to these individuals and families succeed
- Riverport extended these services for the first time to also target youth aging out of foster care



Riverport Scholar House

- This campus includes **64** new apartments.
- 32 units are designated for families
- 32 units are designated for **youth aging out of foster care and want to pursue post-secondary education**

Educational Service Center

- Provides space for counseling, academic coaching, and workshops for participants and community members
- Includes technology center, art studio, a children's creative play space, tutoring rooms, community meeting rooms, a clothes closet and food pantry



Successes!

- Degrees awarded include certificate, associate degree, and apprenticeship completions
- Participants have reported RSH has helped them leave human trafficking situations, continue sobriety, manage daily living skills, counteract social isolation, and become aware of the network of resources available to them



Funding Resources

- Tax Exempt Bond Cap
- Tax Credits
- KHC HOME Funds
- State Housing Trust Funds
- Louisville Metro Housing Authority HOME Funds
- Louisville Metro Housing Authority Project-Based Rental Assistance