

Housing & Health Partnerships



Debbie Burkart
National Vice President, Supportive Housing

June 2018

National
Equity^{INC}
Fund 
an affiliate of LISC

Owner/Partners: Plymouth Housing Group &
Harborview Medical Center
“Plymouth at First Hill”

Location: 7th and Cherry Street, Seattle,
Washington

Program: Seven-story building, 77 low income
housing units, administrative office
area, residential lobby, commercial
support service centers; 30 unit of 77
reserved for Harborview referrals

Highlights: Partnership with Harborview Medical
Center to provide healthcare services
on-site small clinic office (1 FTE RN) to
people with chronic medical issues
after they are discharged from the
hospital



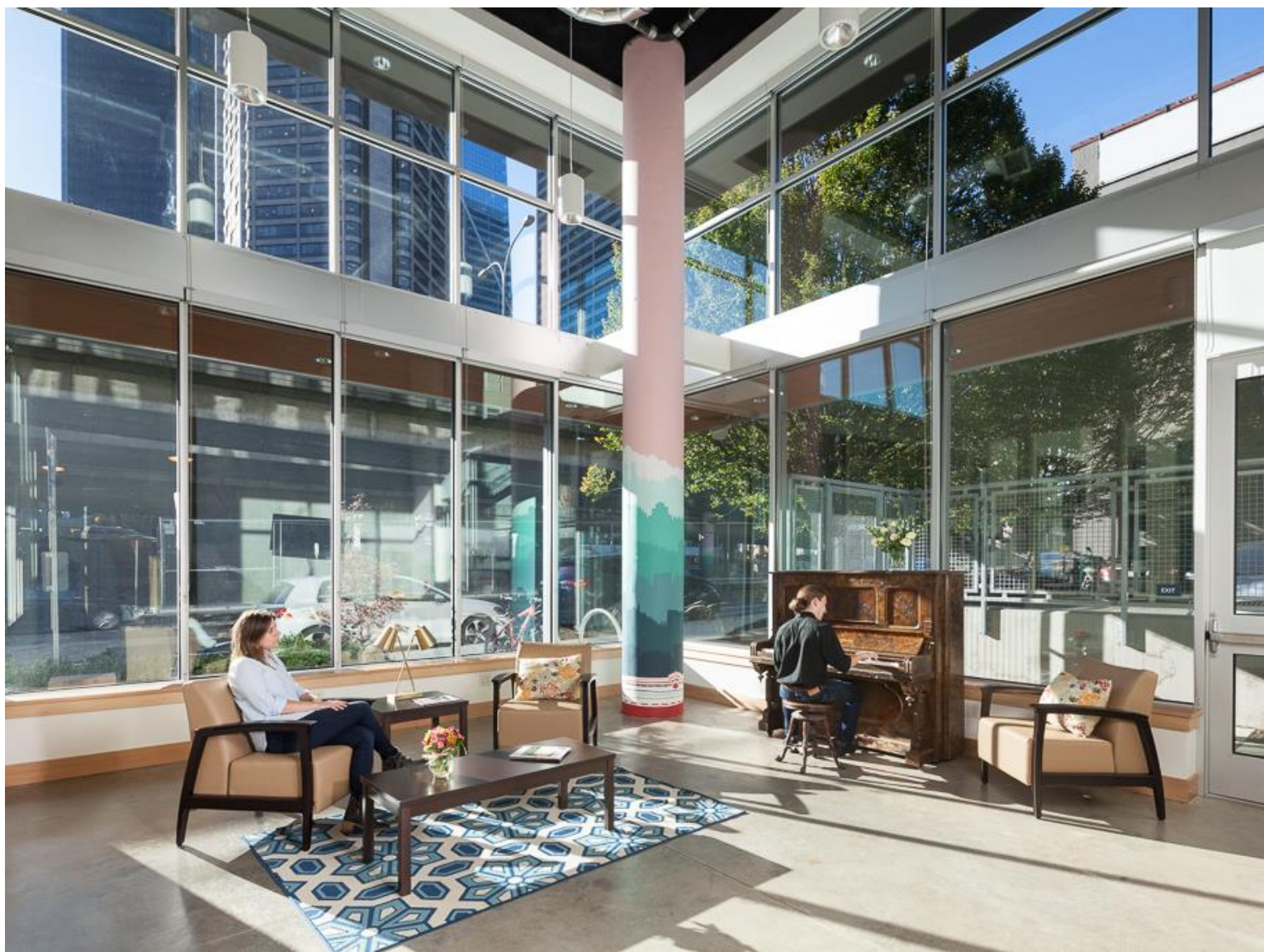
Plymouth on First Hill

Extraordinary things happen when you have great partners

www.nefinc.org

6/21/2018

Page 3



Extraordinary things happen when you have great partners

www.nefinc.org

6/21/2018

Page 4

Owner/Partners: LA Family Housing & Northeast Valley Health Corp.

Location: Lankersheim Blvd, North Hollywood, CA

Program: 80,000 SF Campus, includes 50 Permanent Supportive Housing low income units; 6,000 SF Health Clinic; Bridge Housing for Single Adults and Families; Social Services On-site

Highlights: Demolished aging Shelter and 1,500 SF clinic to create a Service Integration Model, not just co-location, of affordable housing with easy access to Health Care and Social Services from variety of agencies (e.g., VA, DMH, Dept SS, LA Unified school district)



The Courtyard- at The Campus at LA Family Housing

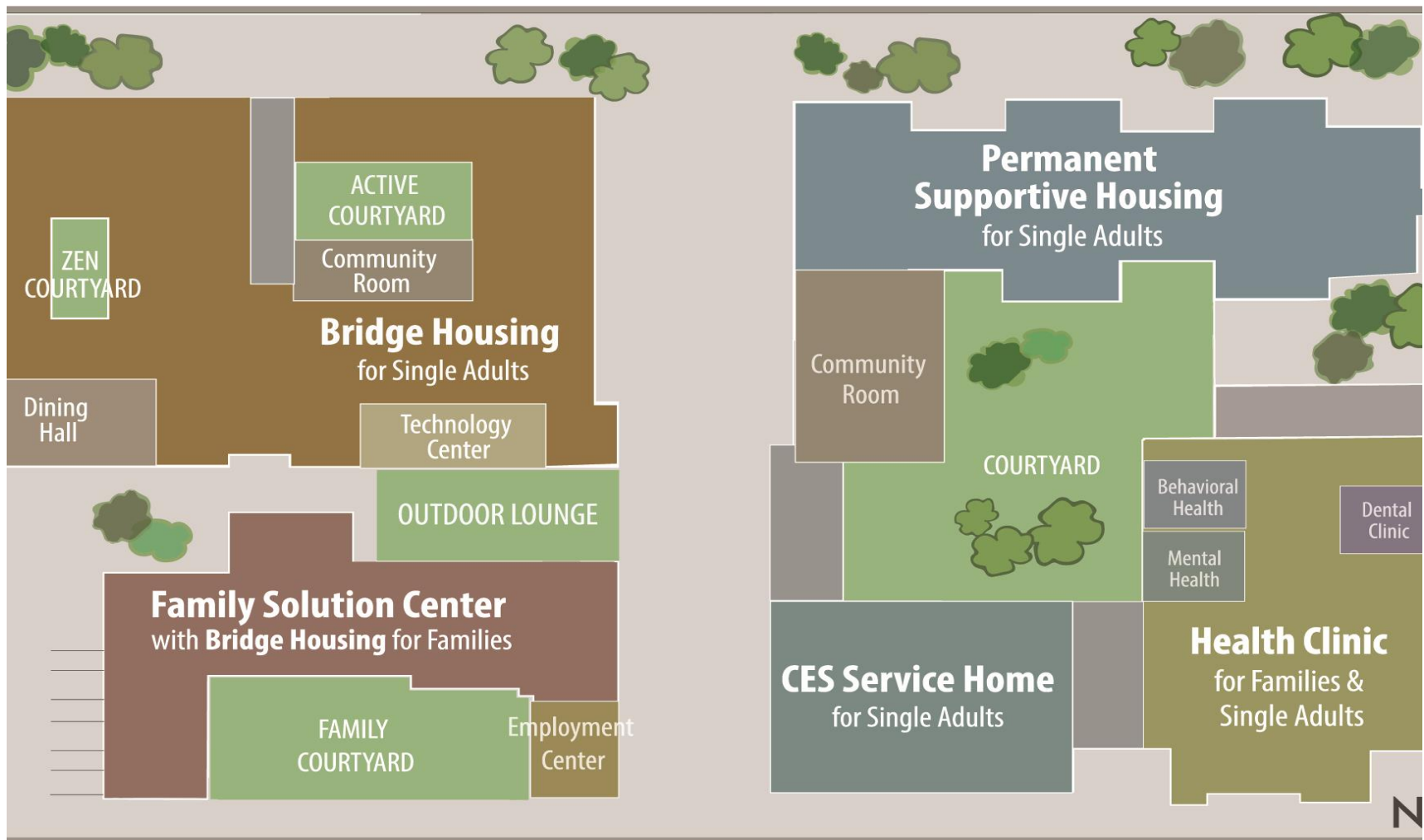
Extraordinary things happen when you have great partners

www.nefinc.org

6/21/2018

Page 6

National
Equity
Fund 
an affiliate of LISC



The Campus at LA Family Housing

Extraordinary things happen when you have great partners

www.nefinc.org

6/21/2018

Page 7